

# TWO-Person Mechanics



# Pre Game & Jump Ball

- Position
- Direction & arrow

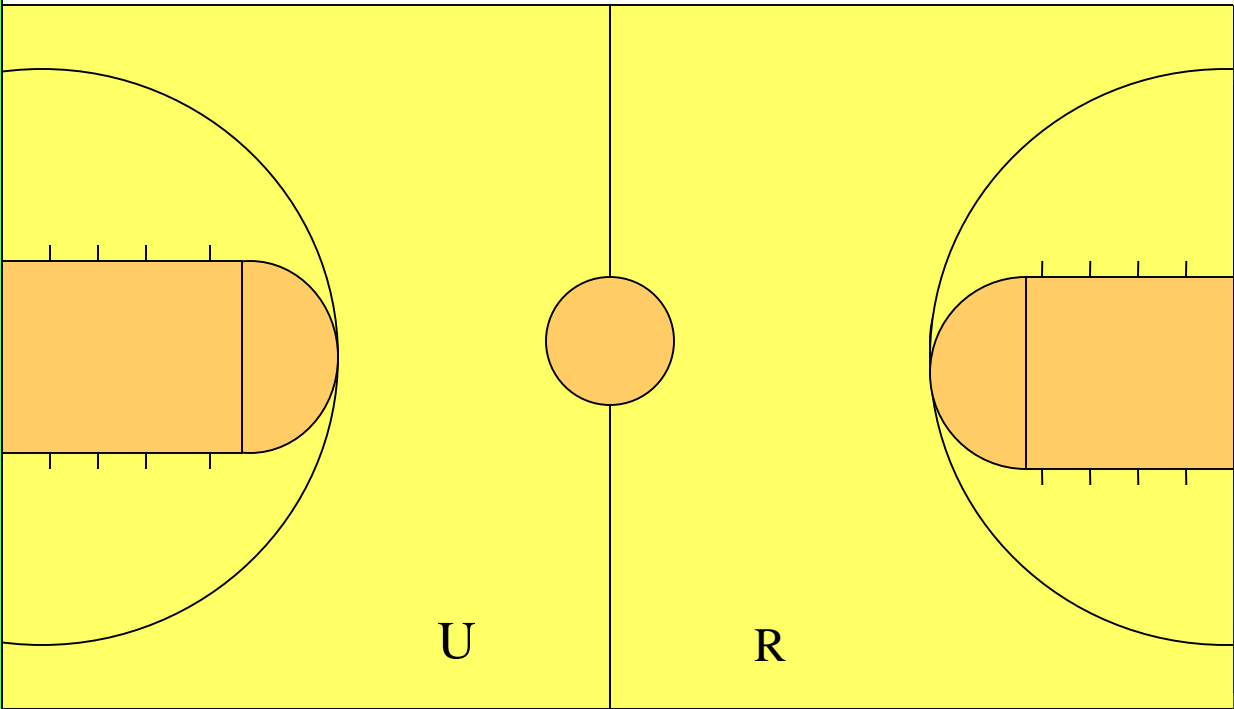


# Position of two officials during pre-game warm-up

TEAM BENCH



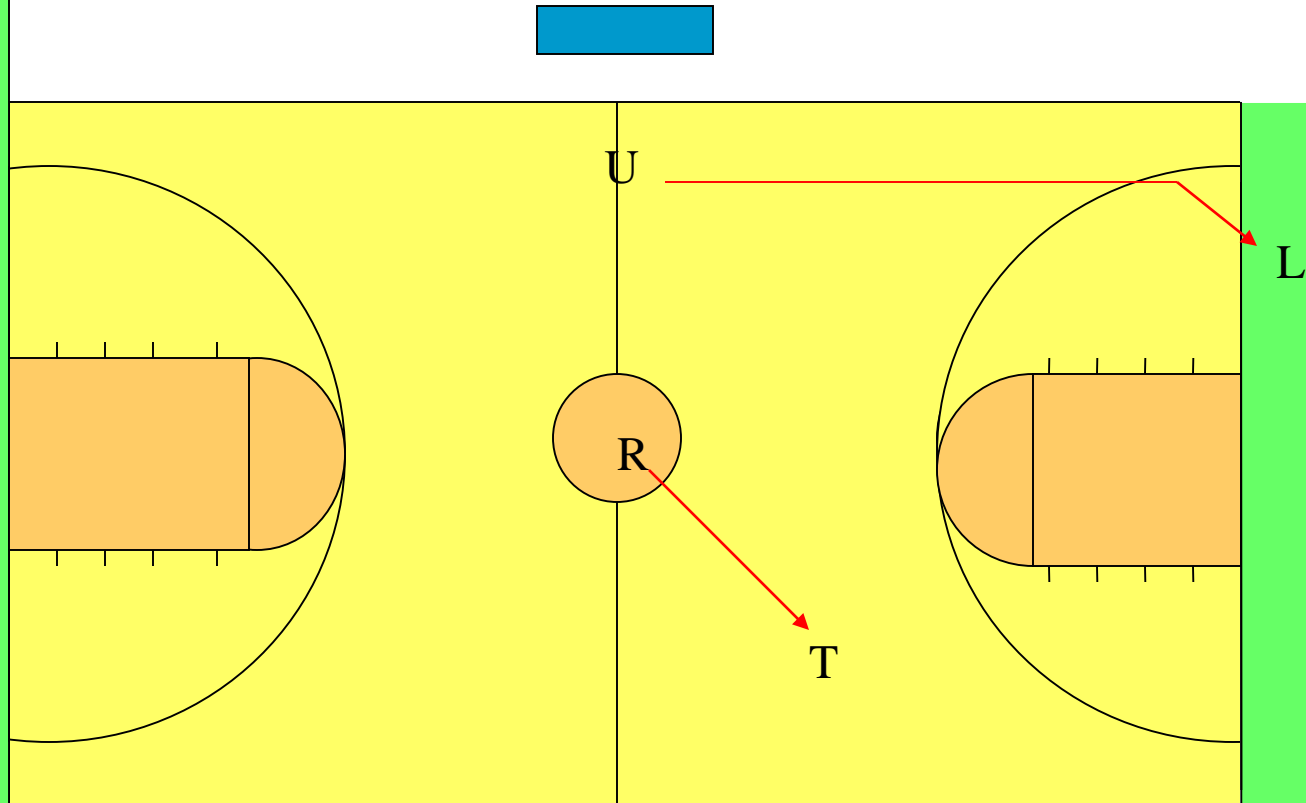
TEAM BENCH



U

R

# DIRECTION AND ARROW



The referee faces the table. The umpire takes a position near the division line and boundary line. When the possession of the ball progresses into a teams frontcourt, the umpire shall go with the ball and become the Lead Official. The referee will become the Trail Official.



# Primary coverage area

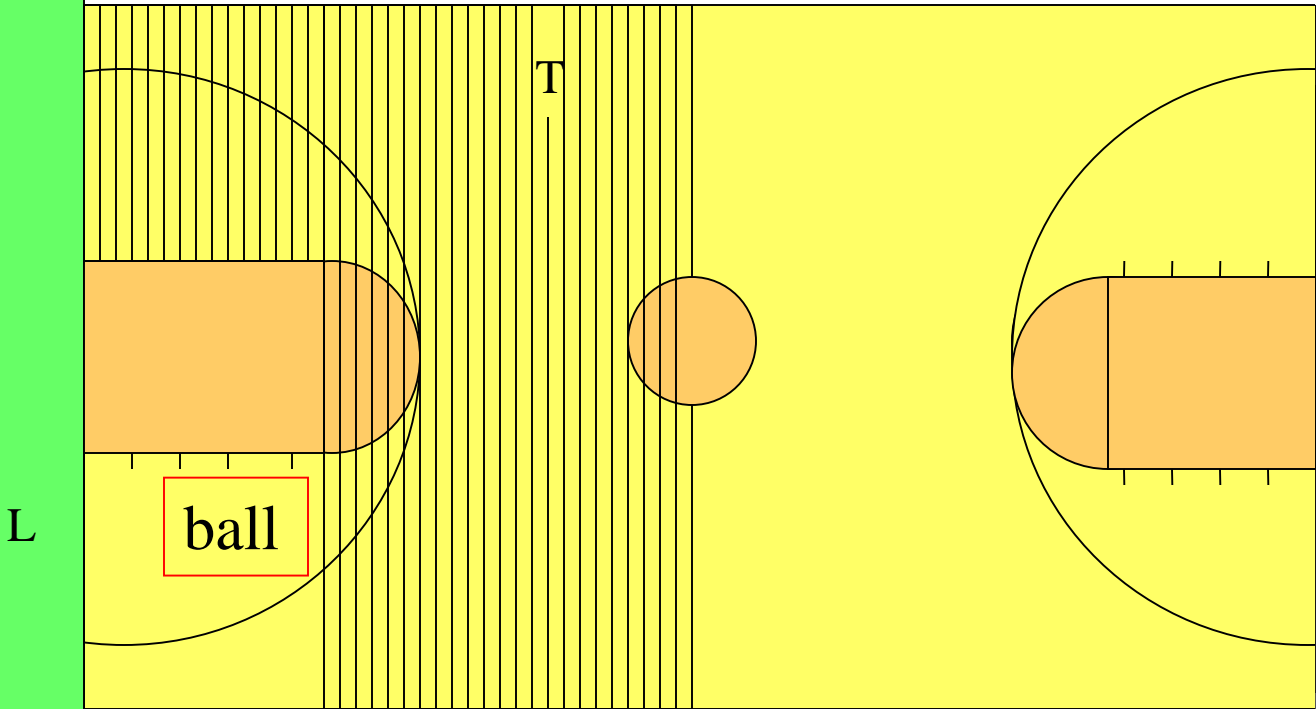
- Ball coverage
- Off ball coverage
- Line responsibilities
- Move for the best angles
- Count responsibilities
- Trail works an arc
- Lead position & movement on the end line
- Delay offense

# BALL COVERAGE – PRIMARY COVERAGE AREAS

TEAM BENCH



TEAM BENCH



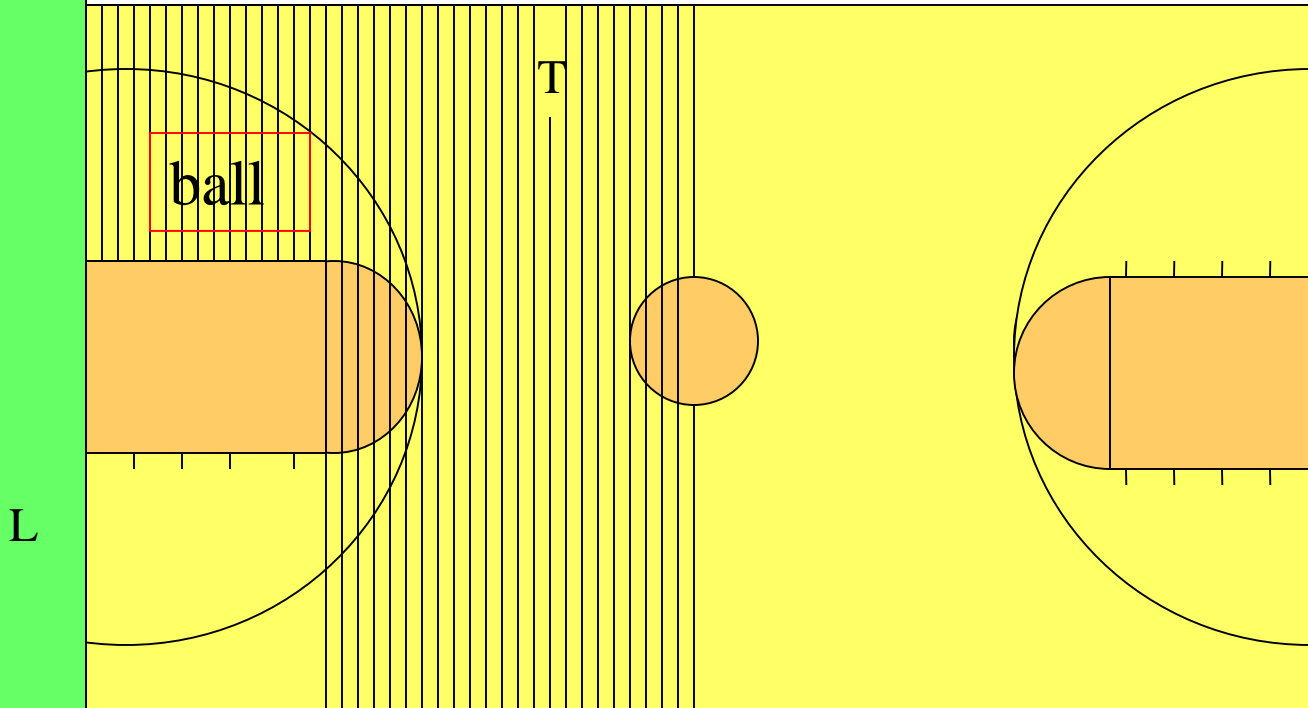
THE LEAD HAS ON BALL COVERAGE. THE TRAIL IS OFF BALL AND OFFICIATING ACTION IN THE SHADED AREA.

# BALL COVERAGE – PRIMARY COVERAGE AREAS

TEAM BENCH



TEAM BENCH



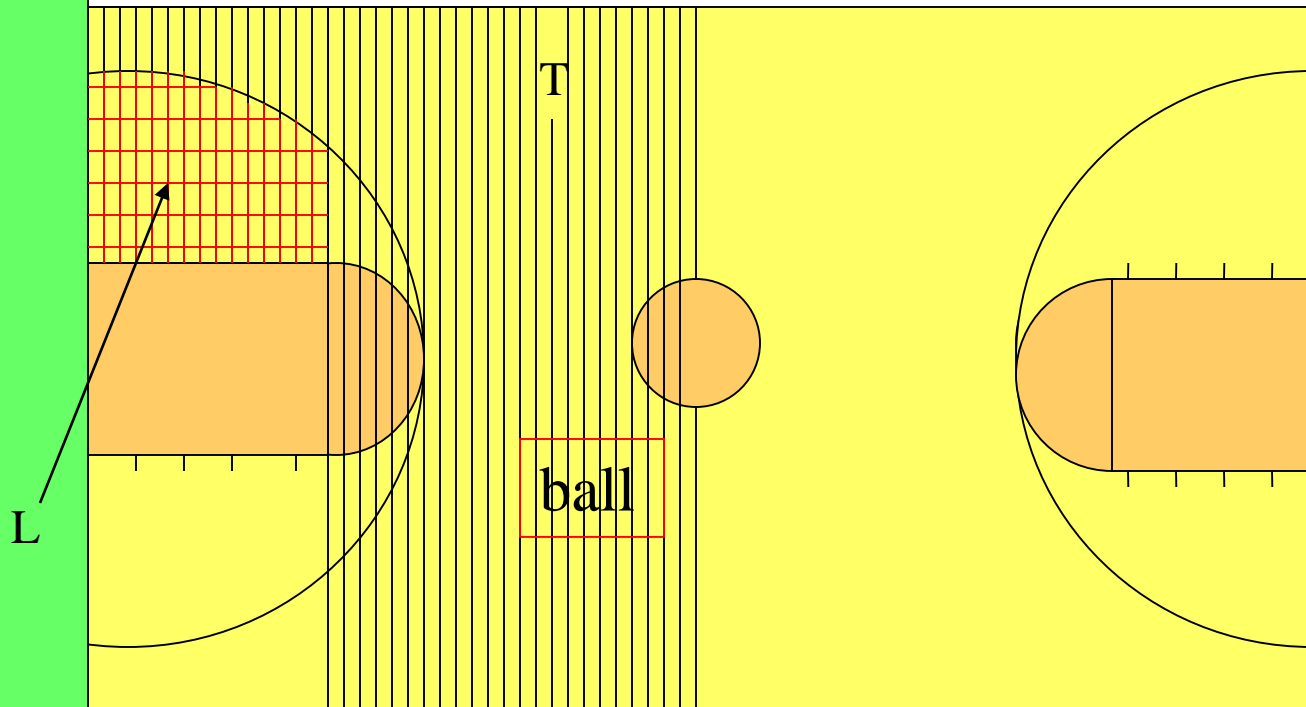
THE TRAIL HAS ON BALL COVERAGE. THE LEAD OFFICIAL IS OFF BALL AND OFFICIATING ACTION IN THE UNSHADED AREA.

# BALL COVERAGE – PRIMARY COVERAGE AREAS

TEAM BENCH



TEAM BENCH



THE TRAIL HAS ON BALL COVERAGE AND IS OFFICIATING THE HIGH ACTION IN THE SHADED AREA. THE LEAD IS OFF BALL AND MUST HELP WITH OFF BALL COVERAGE BY EXTENDING TO THE OTHER SIDE OF THE KEY BECAUSE THE BALL IS HIGH.

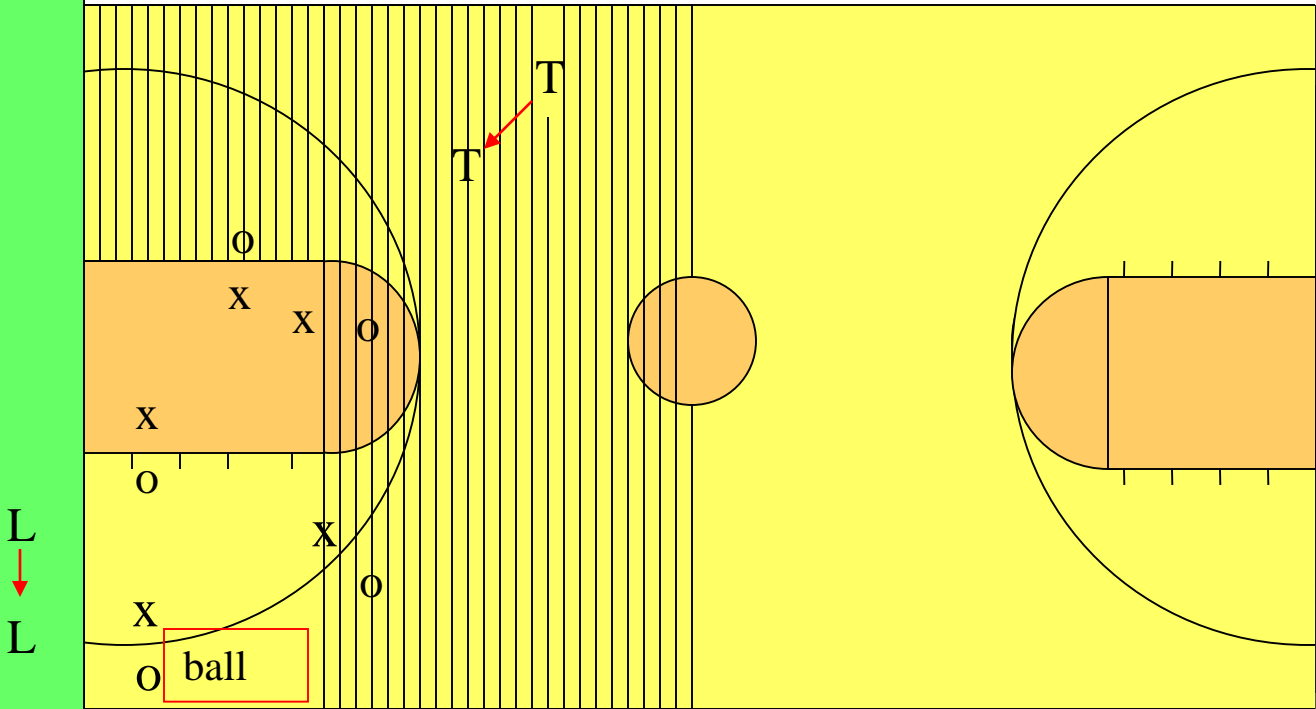


# OFF BALL COVERAGE – 3 POINT IN LEAD AREA

TEAM BENCH



TEAM BENCH



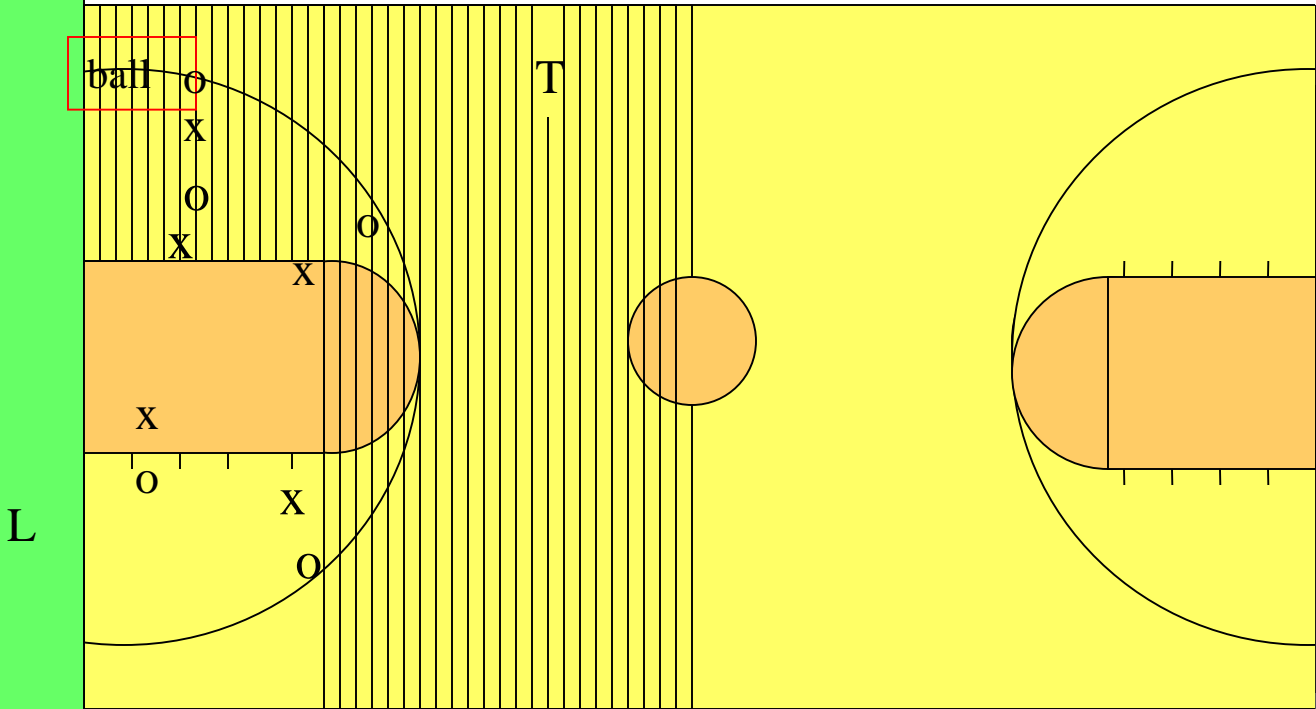
THE LEAD MOVES TO A POSITION TO GET THE THREE POINT LINE COVERED WHEN THE BALL IS IN THIS AREA. THE TRAIL OFFICIAL POSITIONS TO COVER THE SIGNIFICANT ACTION OFF THE BALL.

# OFF BALL COVERAGE – BALL IN TRAIL AREA

TEAM BENCH



TEAM BENCH



THE TRAIL OFFICIAL HAS BALL WHILE THE LEAD OFFICIAL WORKS THE KEY FOR GOOD COVERAGE OFF THE BALL.

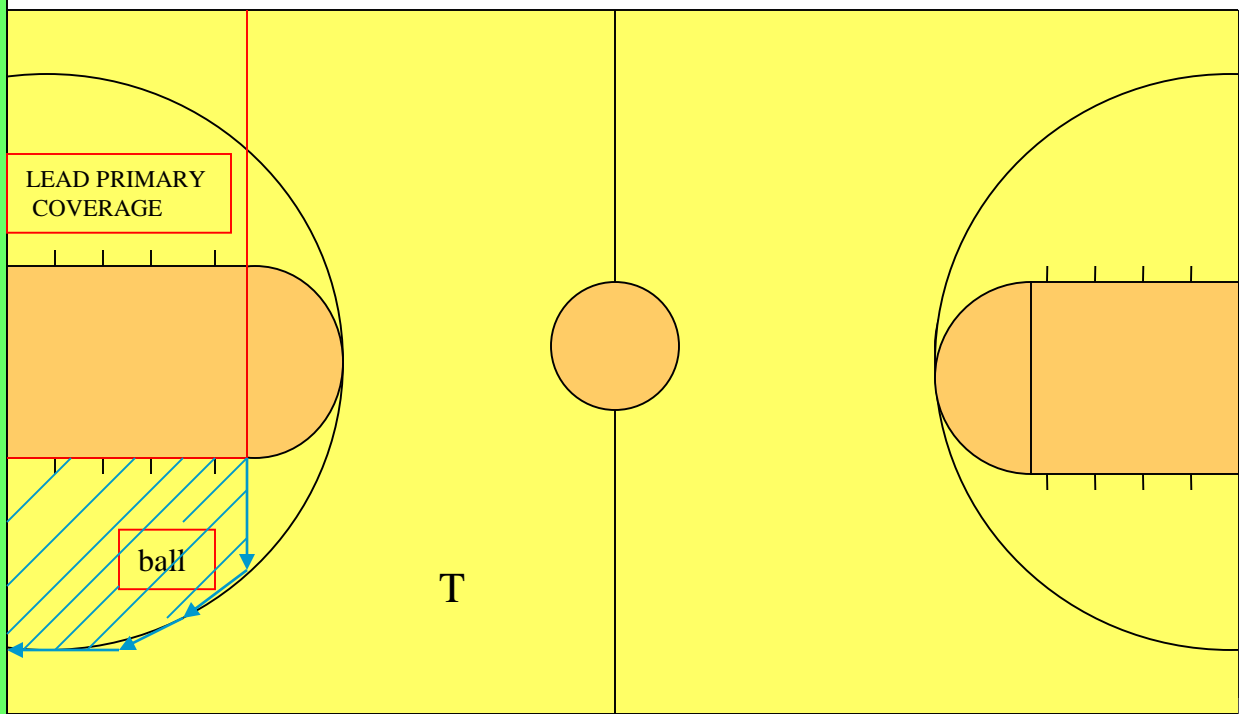
# LEAD "BALL SIDE" PRIMARY CHANGED

TEAM BENCH



TEAM BENCH

L  
↓  
L



LEAD ROTATES ACROSS TO GET BETTER POST COVERAGE. ASSUMES ADDITIONAL COVERAGE

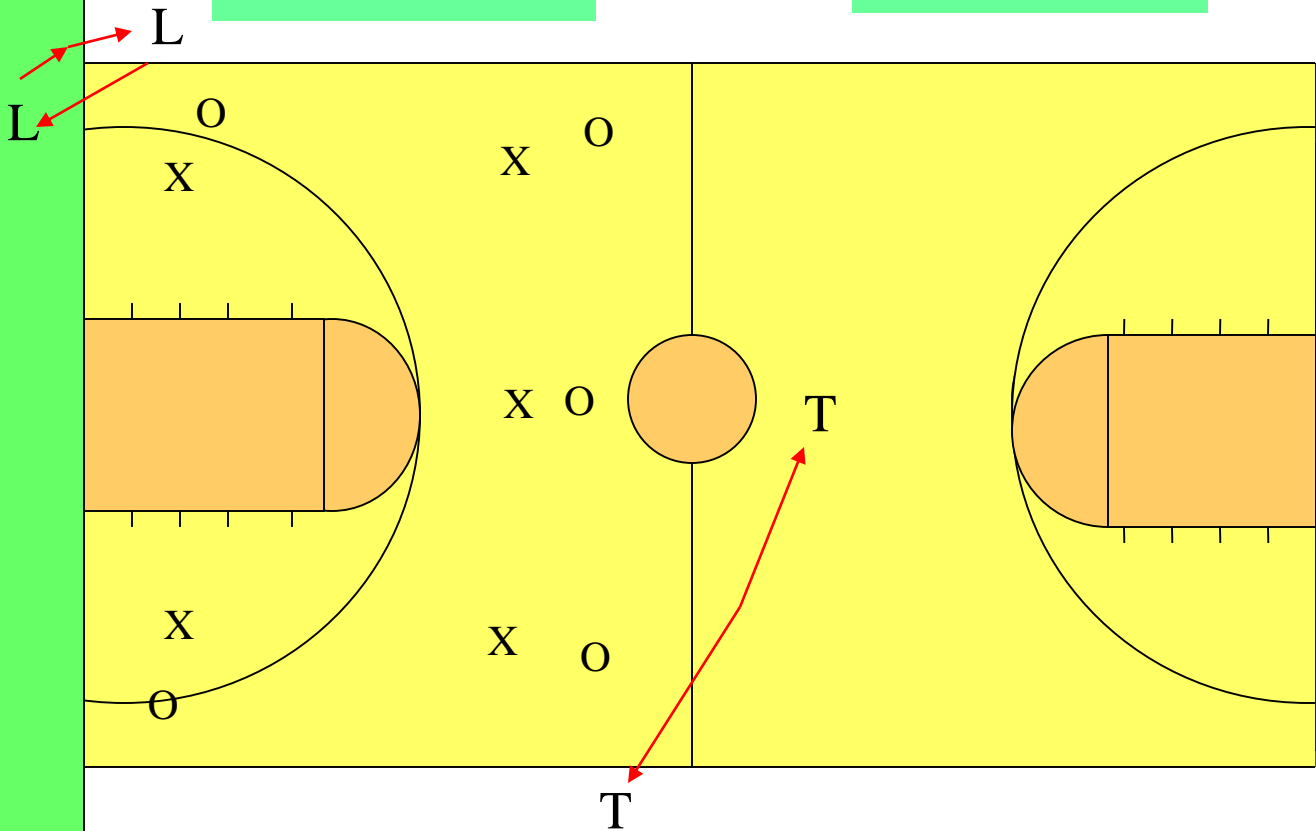
THE COVERAGE AREA FOR THE BALL-SIDE LEAD IS NOW EXTENDED TO THE AREA BETWEEN THE THREE POINT ARC AND THE CLOSEST LANE LINE, BELOW THE FREE THROW LINE EXTENDED. IT IS IMPORTANT TO NOTE THAT THE EXTENDED COVERAGE ONLY APPLIES WHEN THE LEAD MOVES BALL-SIDE . IF THE LEAD STAYS OPPOSITE THE FLOOR IS "BALANCED"

# DELAY OFFENSE

TEAM BENCH



TEAM BENCH



COVERAGE FOR THE "DELAY" OR "FOUR CORNER" OFFENSE.



# Throw-ins

- Box players in
- Bump & Run
- Switch on Sideline throw-ins
- Designate spot

# BOX PLAYERS IN

TEAM BENCH



TEAM BENCH

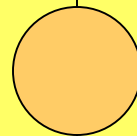
L1

ball

ball

L2

T2



T1

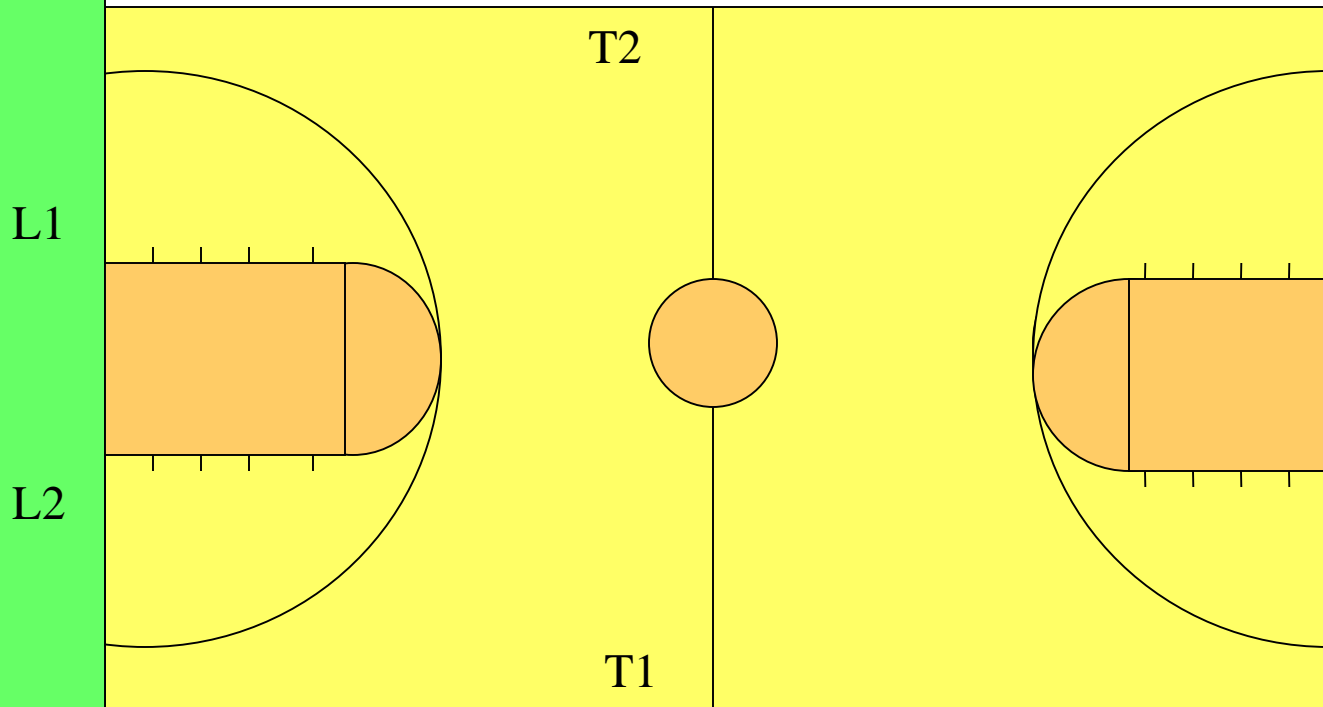
FOR THE ADMINISTRATION OF THE THROW IN IN THE FRONT COURT, THE LEAD OFFICIAL IS RESPONSIBLE FOR THE ENTIRE END LINE AND THE NEARER SIDELINE. THE TRAIL OFFICIAL IS RESPONSIBLE FOR HIS/HER ENTIRE NEARER SIDELINE AND DIVISION LINE.

# BOX PLAYERS IN

TEAM BENCH



TEAM BENCH



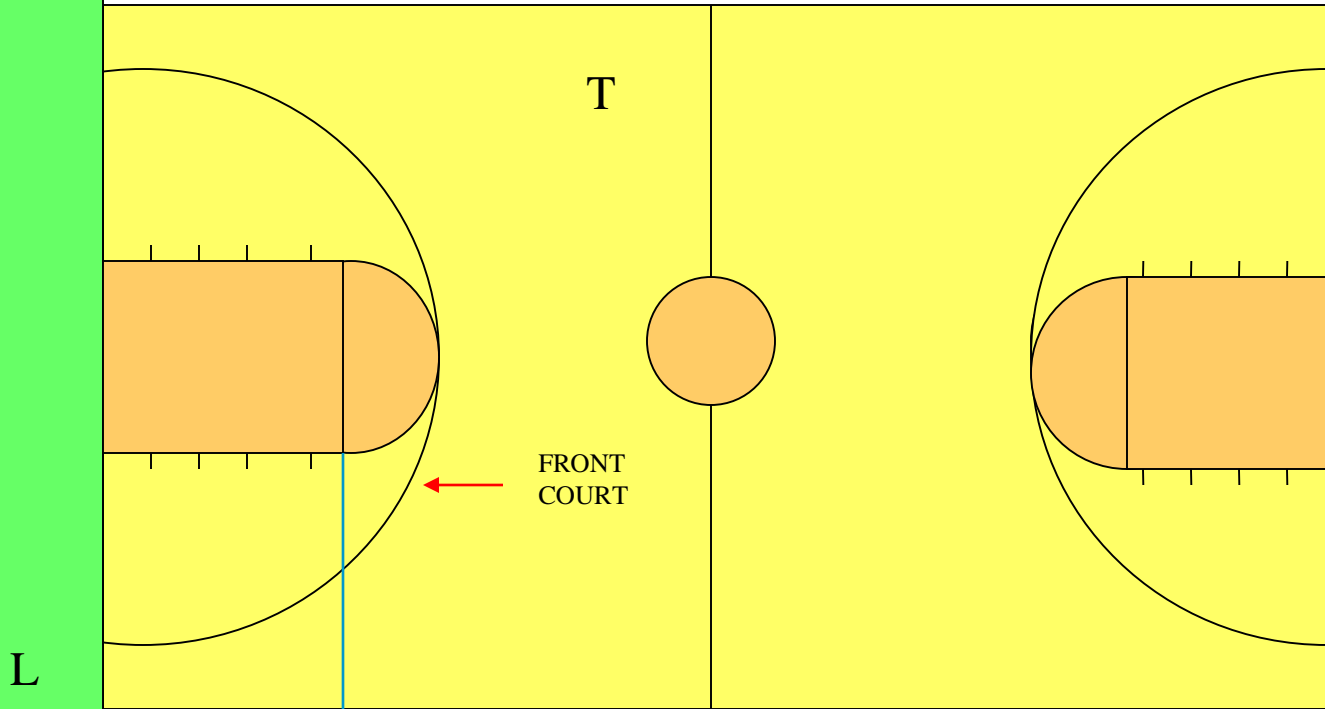
THE SIDELINE RESPONSIBILITIES CHANGES FROM POSITION 1 TO POSITION 2. EACH OFFICIAL WILL HANDLE THE THROW-IN OR OUT-OF-BOUNDS PLAY ALONG HIS/HER DESIGNATED LINES. OFFICIALS POSITION SHOULD NOT BE STATIONARY. THE OFFICIALS SHOULD ALWAYS BE MOVING TO GET PROPER ANGLE COVERAGE.

# THROW IN POSITION - BOX PLAYERS IN

TEAM BENCH



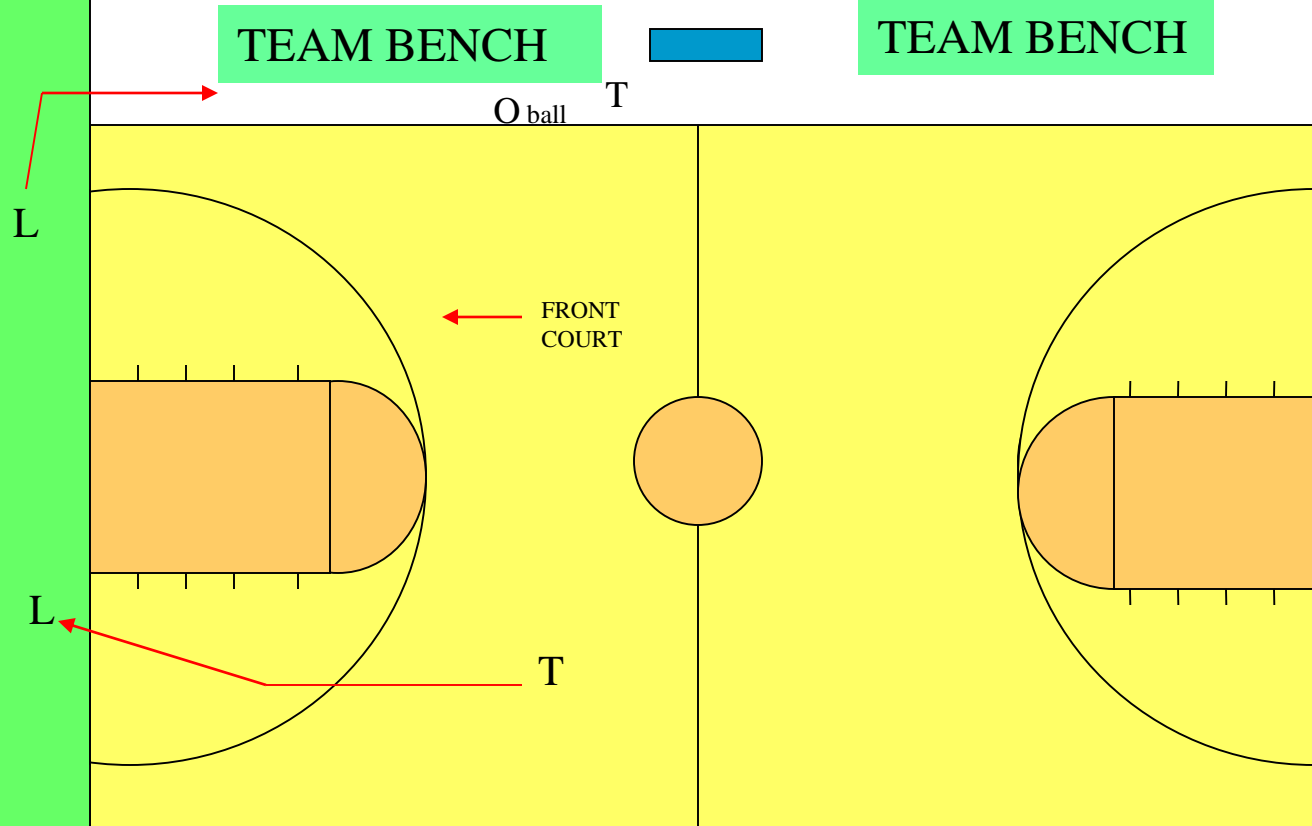
TEAM BENCH



**Q** LEAD OFFICIAL ADMINISTERS THE THROW-IN ON THE SIDELINE FOR WHICH HE/SHE IS RESPONSIBLE FOR. IF THE DESIGNATED SPOT FOR THE THROW-IN IS HALF WAY BETWEEN THE FREE THROW LINE EXTENDED AND AT THE END LINE, THE LEAD REMAINS ON THE ENDLINE AND WILL BOUNCE THE BALL TO THE THROWER. THE SAME PROCEDURE IS USED ON THE OPPOSITE SIDELINE

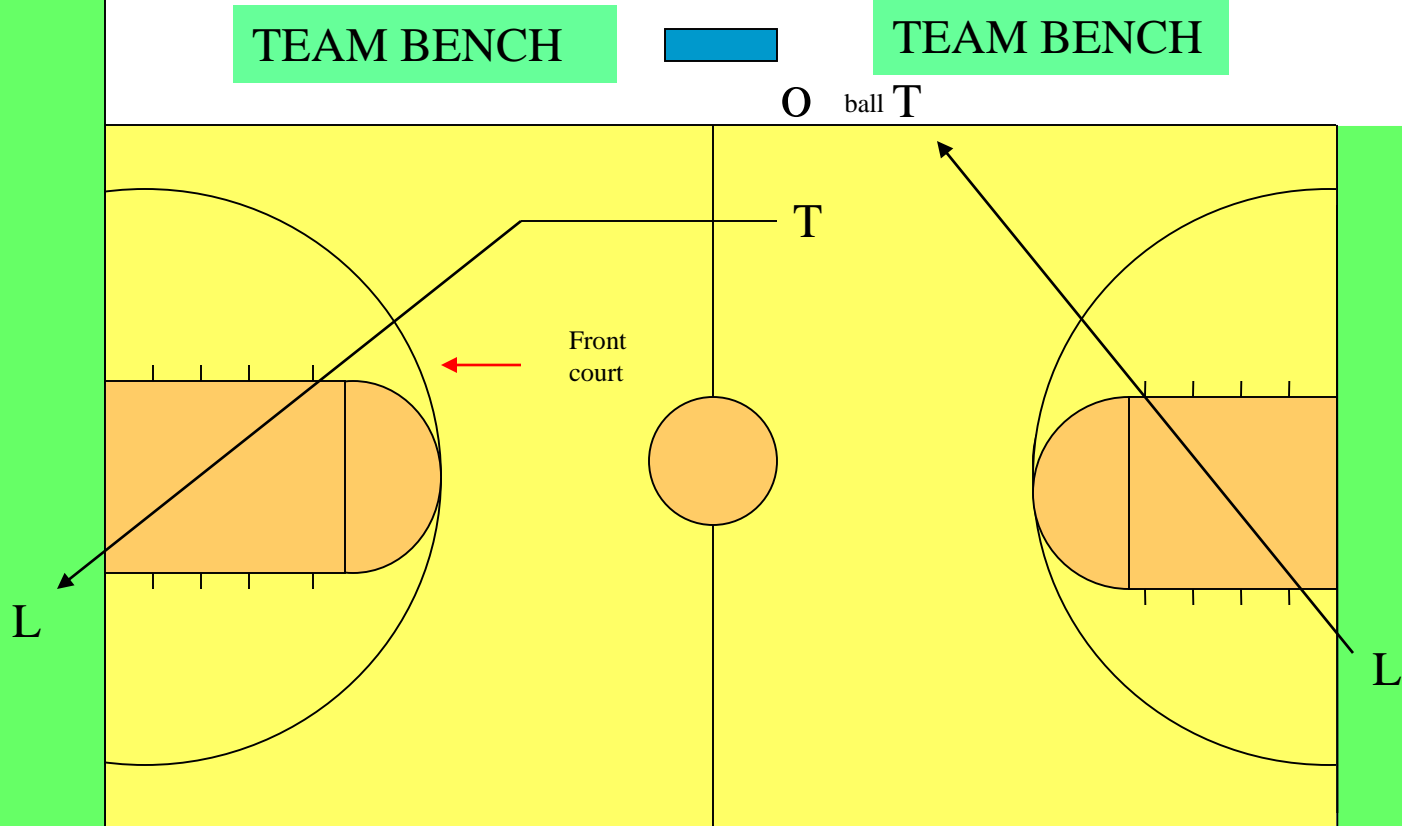


# SWITCH ON SIDELINE THROW-INS



LEAD OFFICIAL ADMINISTERS THE THROW-IN FOR WHICH HE/SHE IS RESPONSIBLE. IF THE DESIGNATED SPOT FOR THE THROW-IN IS MORE THAN HALF WAY BETWEEN THE BASELINE AND THE FREE THROW LINE EXTENDED, THE LEAD OFFICIAL ADMINISTERING THE THROW-IN WILL NOW BECOME THE NEW TRAIL. THE ORIGINAL TRAIL BECOMES THE NEW LEAD. THE SAME PROCEDURE IS USED ON THE OPPOSITE SIDE.

# BOX PLAYERS IN – BUMP AND RUN



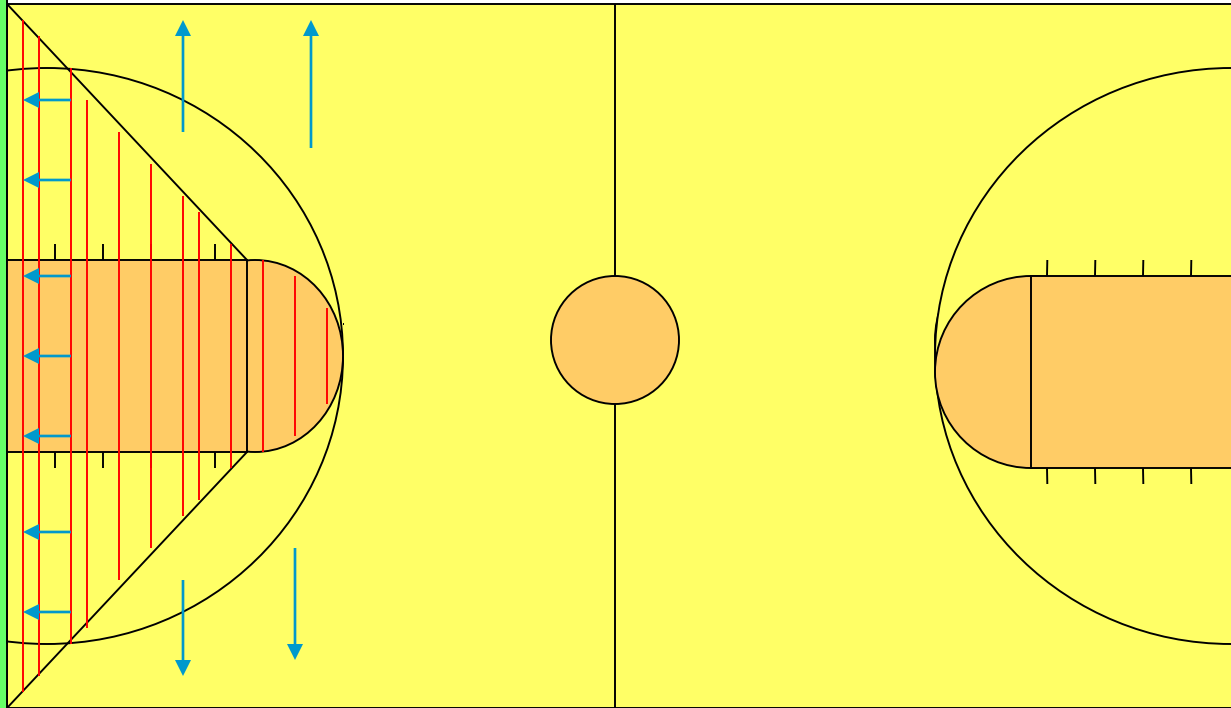
TRAIL OFFICIAL ADMINISTERS ALL THROW-INS IN THE BACKCOURT. TRAIL OFFICIAL HOLDS THE BALL UNTIL THE LEAD OFFICIAL IS DOWN COURT AND ACROSS SO THAT BOTH SIDELINES, THE END LINE AND THE DIVISION LINE CAN BE ADEQUATELY COVERED. THIS IS AN OPPORTUNITY FOR THE TRAIL OFFICIAL TO USE THE BOUNCE PASS FOR THE THROW-IN.

# DESIGNATED SPOT

TEAM BENCH



TEAM BENCH



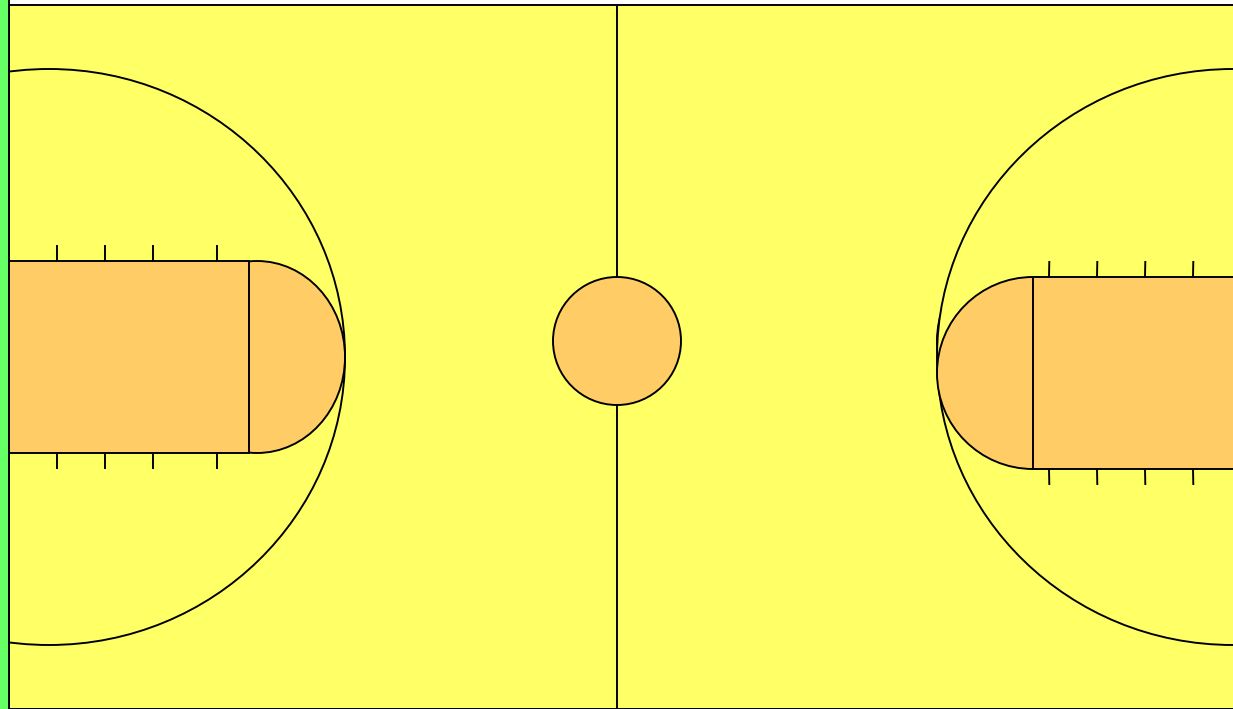
ENDLINE VS SIDELINE

# DESIGNATED SPOT AFTER TECHNICAL FOUL

TEAM BENCH



TEAM BENCH



L

T ball

**AFTER A TECHNICAL FOUL, THE THROW-IN SHALL BE ADMINISTERED AT THE DIVISION LINE ON THE SIDE COURT OPPOSITE THE TABLE**



# Fouls

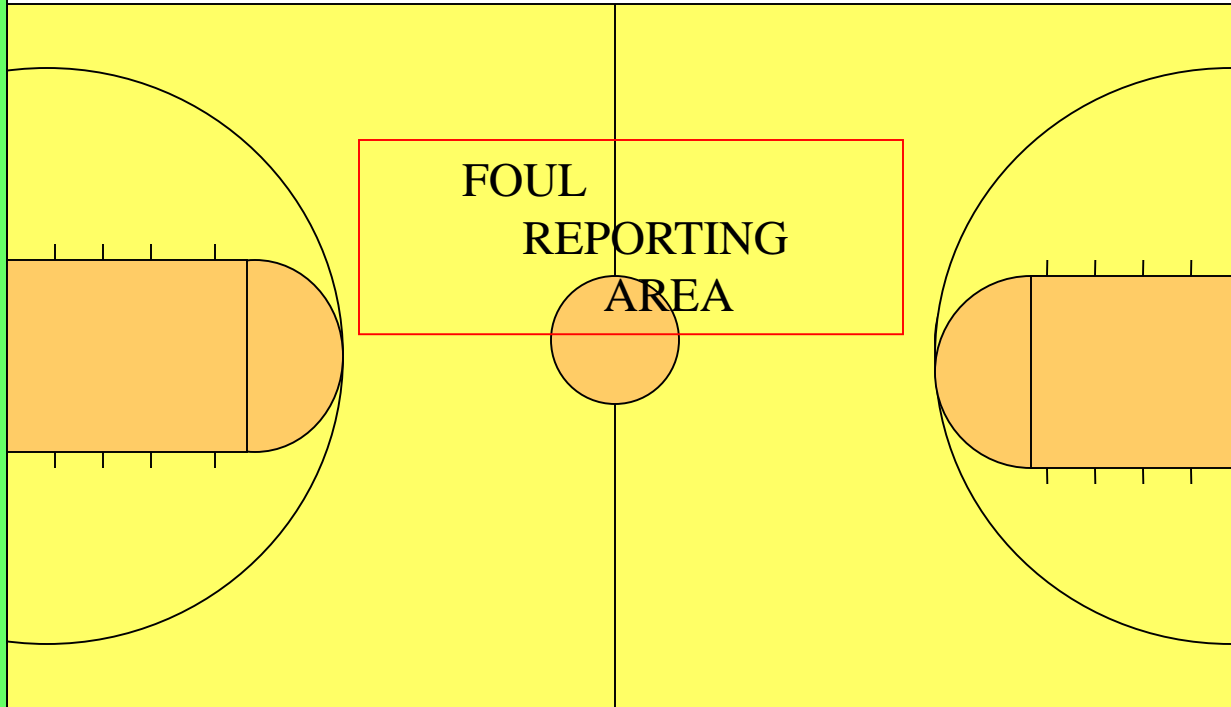
- Proper sequence of signals
- Designate throw in spot
- Get the **CORRECT** shooter
- Switch on **ALL** fouls

# PROPER SEQUENCE OF SIGNALS

TEAM BENCH



TEAM BENCH

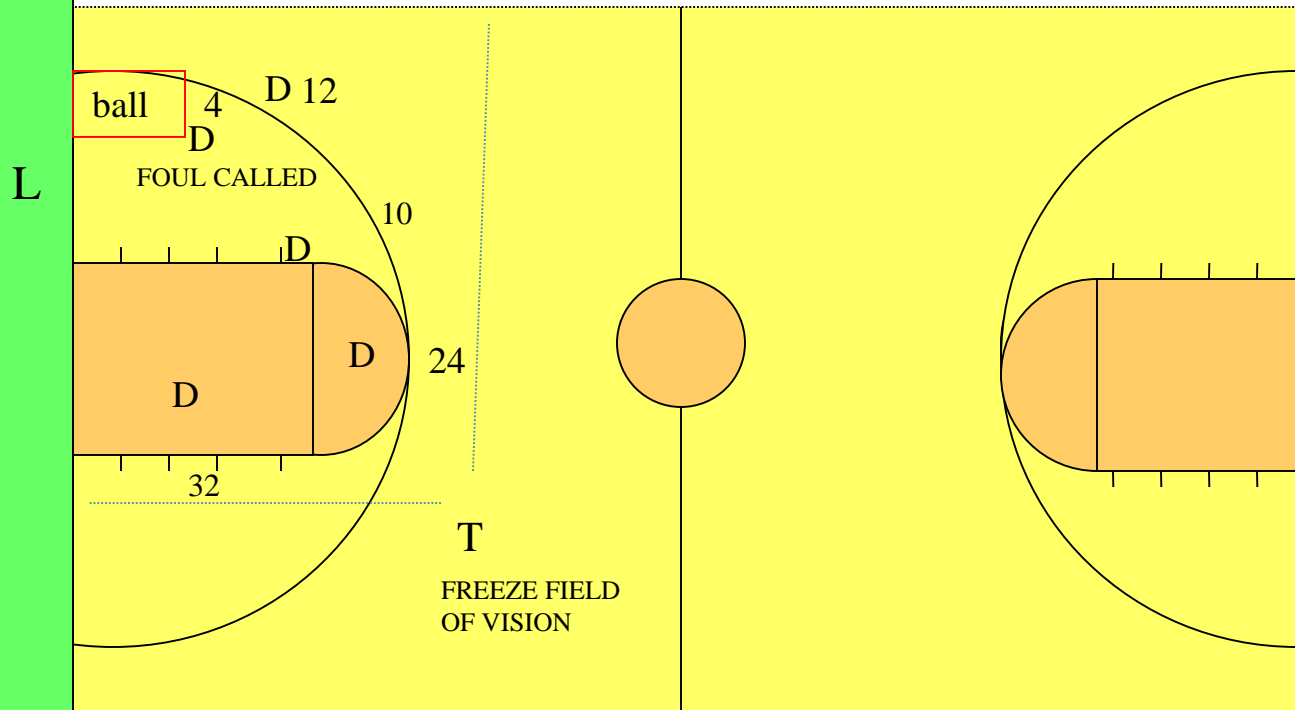


# SWITCH ON ALL FOULS

TEAM BENCH



TEAM BENCH



FOUL CALLED BY LEAD  
TRAIL "FREEZES FIELD OF VISION"

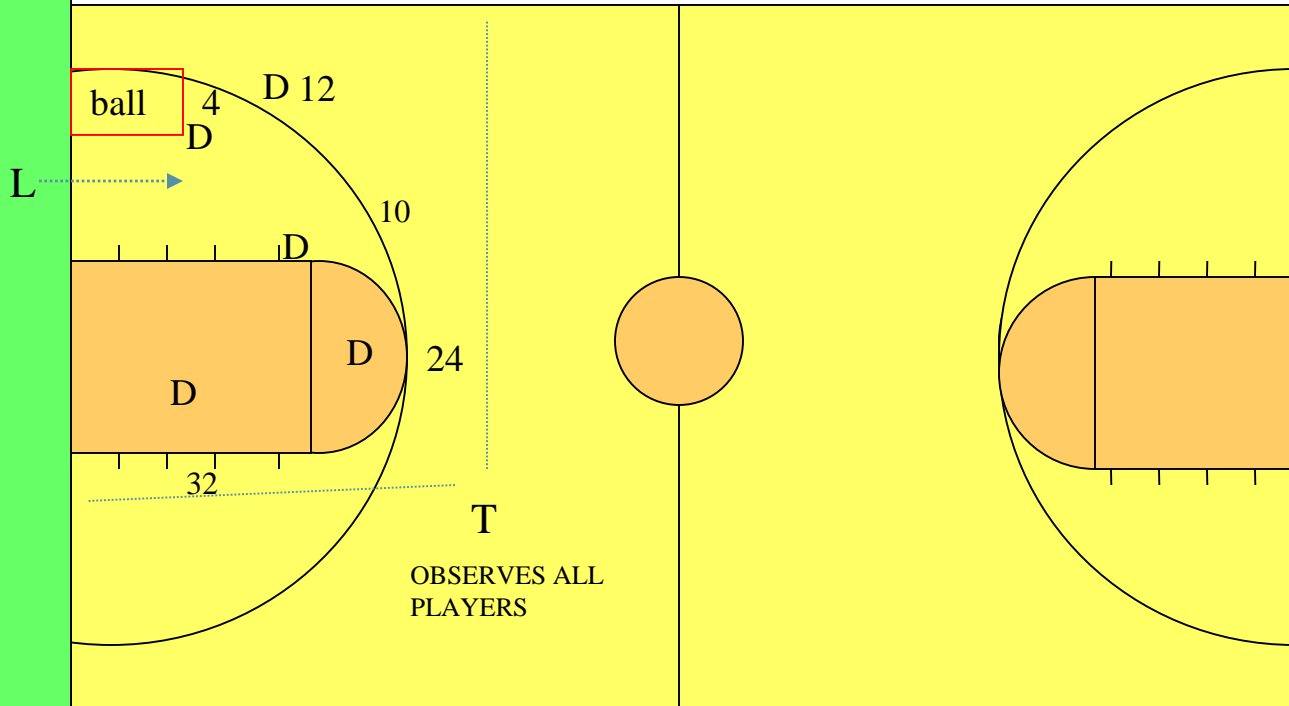
# SWITCH ON ALL FOULS

TEAM BENCH



TEAM BENCH

MOVES NEAR AND  
INFORMS PLAYER



LEAD OFFICIAL THAT CALLED THE FOUL MOVES NEAR THE PLAY AND INFORMS PLAYERS.  
TRAIL OFFICIAL OBSERVES ALL PLAYERS.

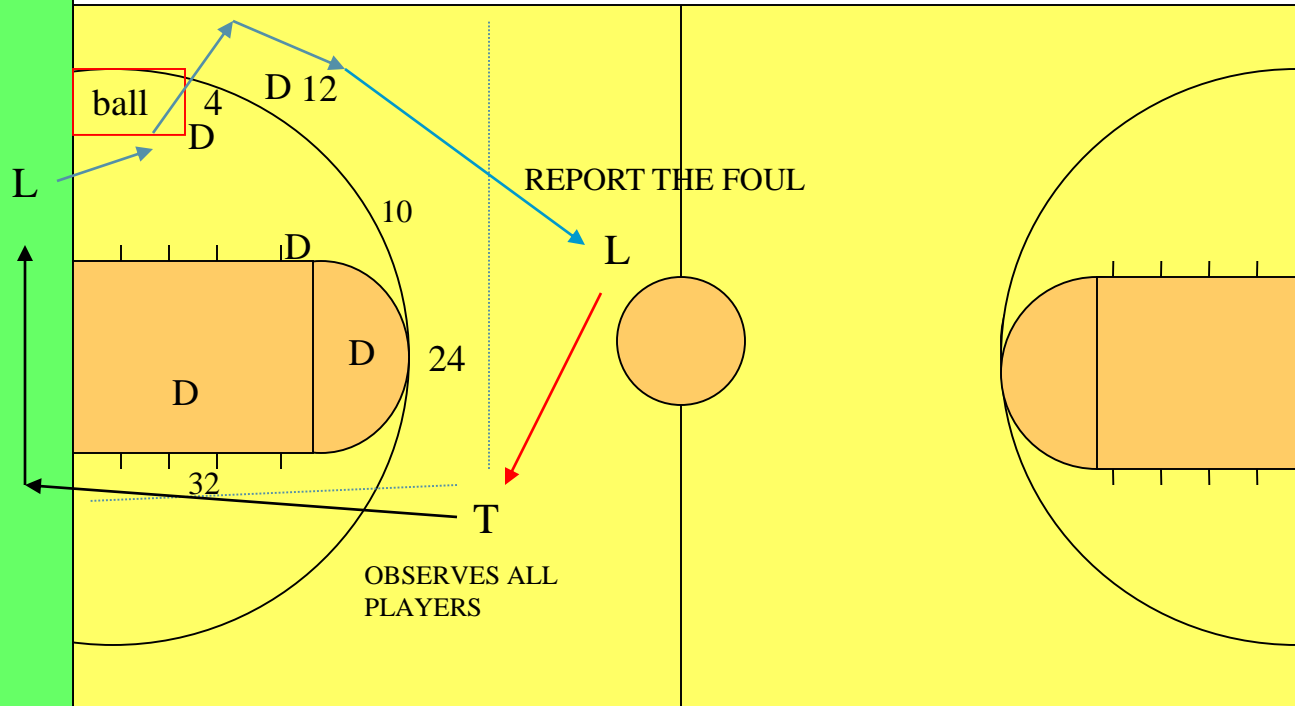


# SWITCH ON ALL FOULS

TEAM BENCH



TEAM BENCH



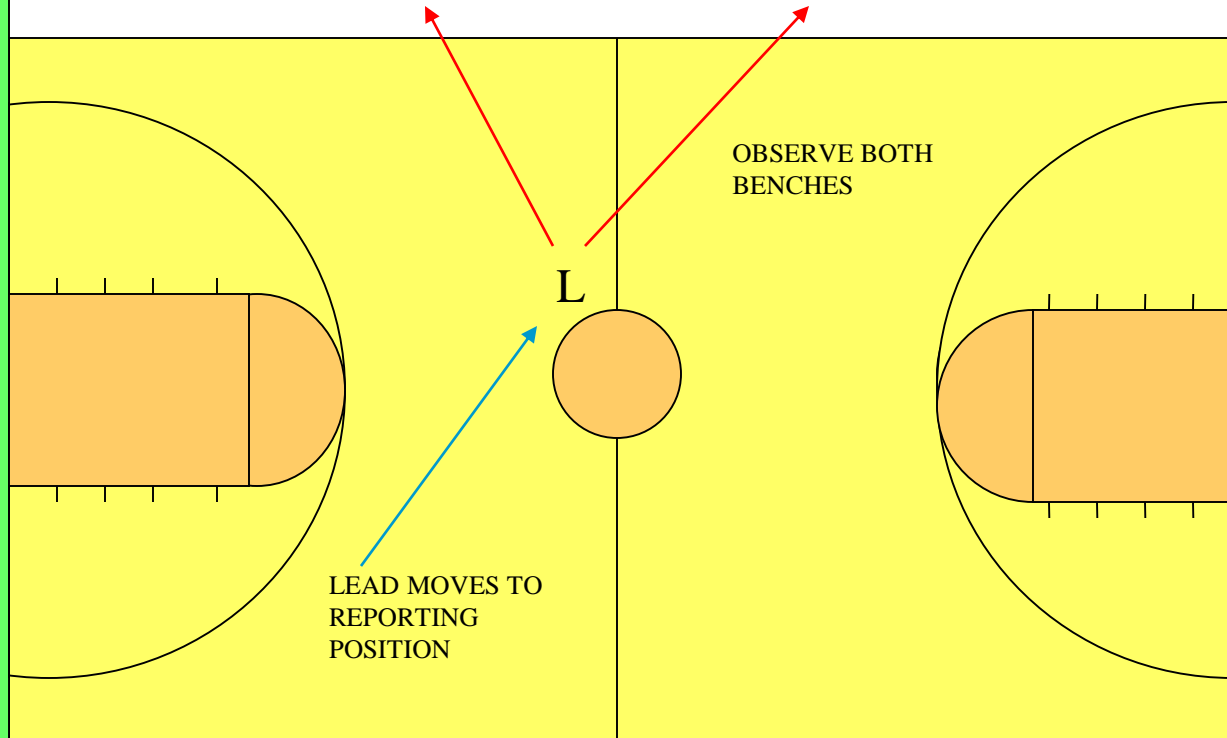
LEAD OFFICIAL GOES AROUND ALL PLAYER TO REPORT THE FOUL TO THE BENCH  
TRAIL OFFICIAL OBSERVES ALL PLAYERS, WHILE MAKING SWITCH TO LEAD POSITION

# SWITCH ON ALL FOULS – AFTER REPORTING FOUL

TEAM BENCH



TEAM BENCH



THE OFFICIAL OBSERVES BOTH BENCHES WHILE MOVING WHILE MOVING TO REPORTING POSITION.



# Free Throws

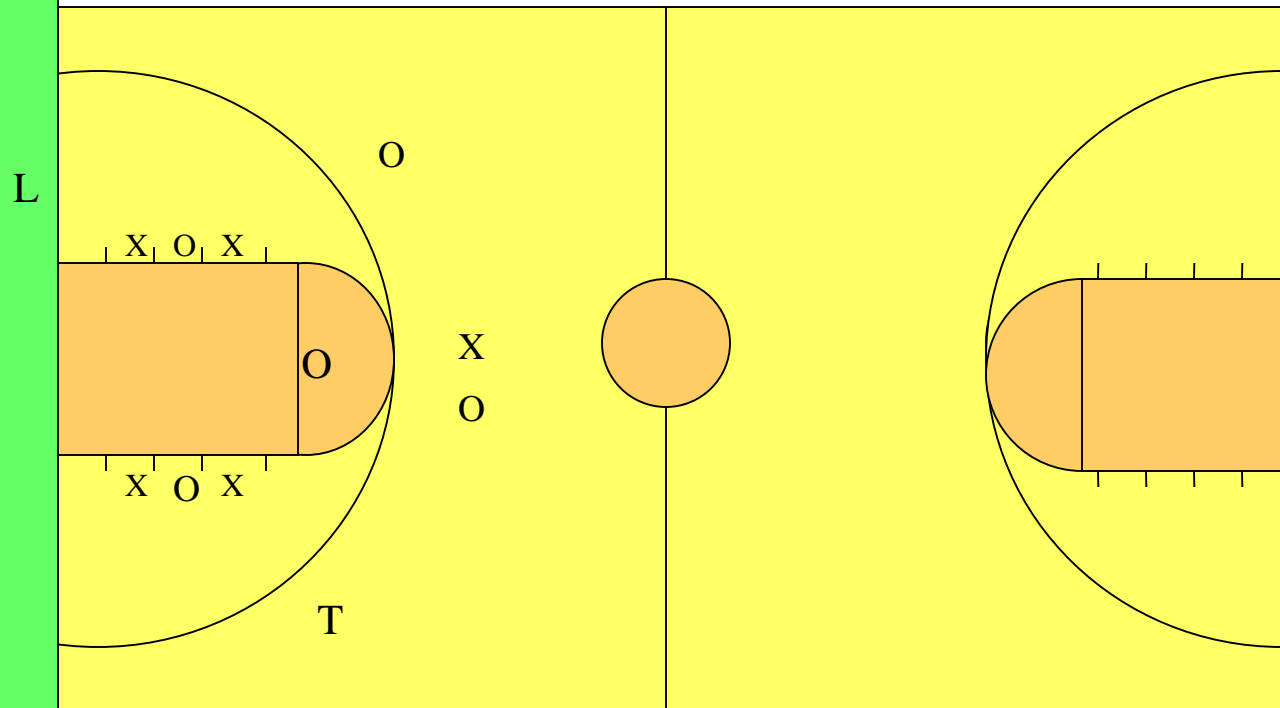
- Lane Positions
- Lane Responsibilities

# LANE RESPONSIBILITY – LEAD POSITION

TEAM BENCH



TEAM BENCH



WHEN THE BALL IS NOT GOING TO BE REBOUNDED AFTER THE SHOT THE LEAD IS ONE STEP OFF THE ENDLINE AND ONE STEP PAST THE LANE LINE

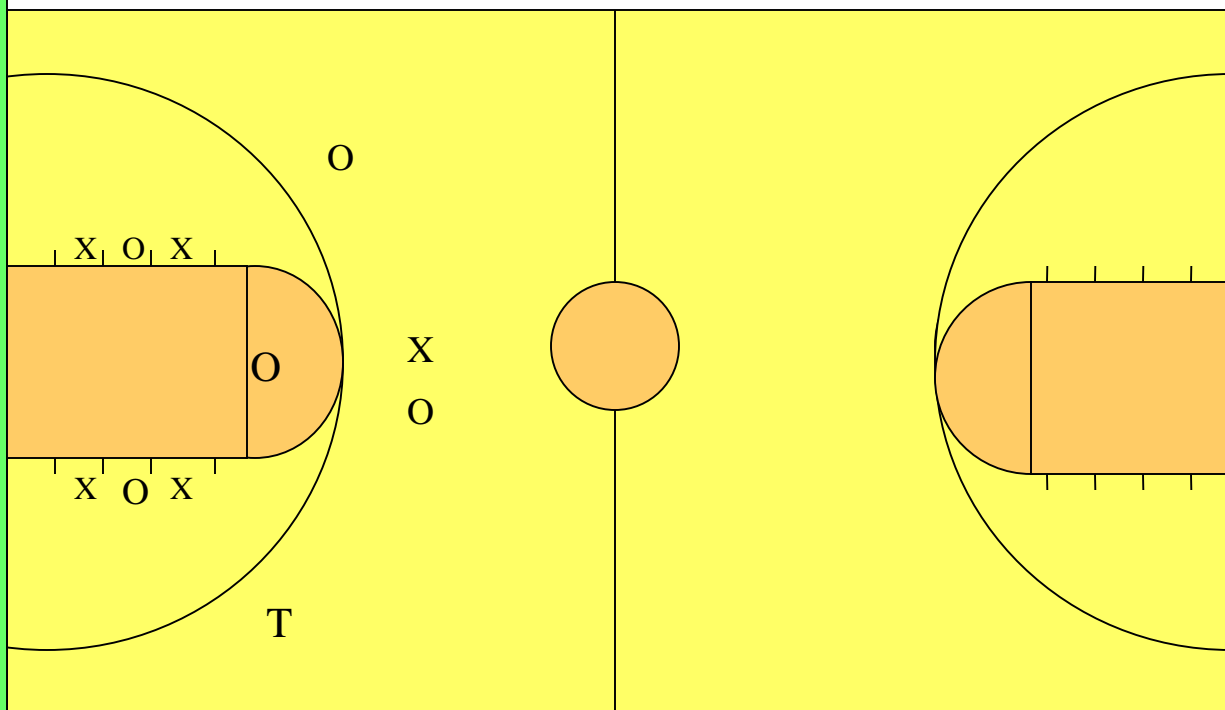
# LANE RESPONSIBILITY – LEAD POSITION

TEAM BENCH



TEAM BENCH

L



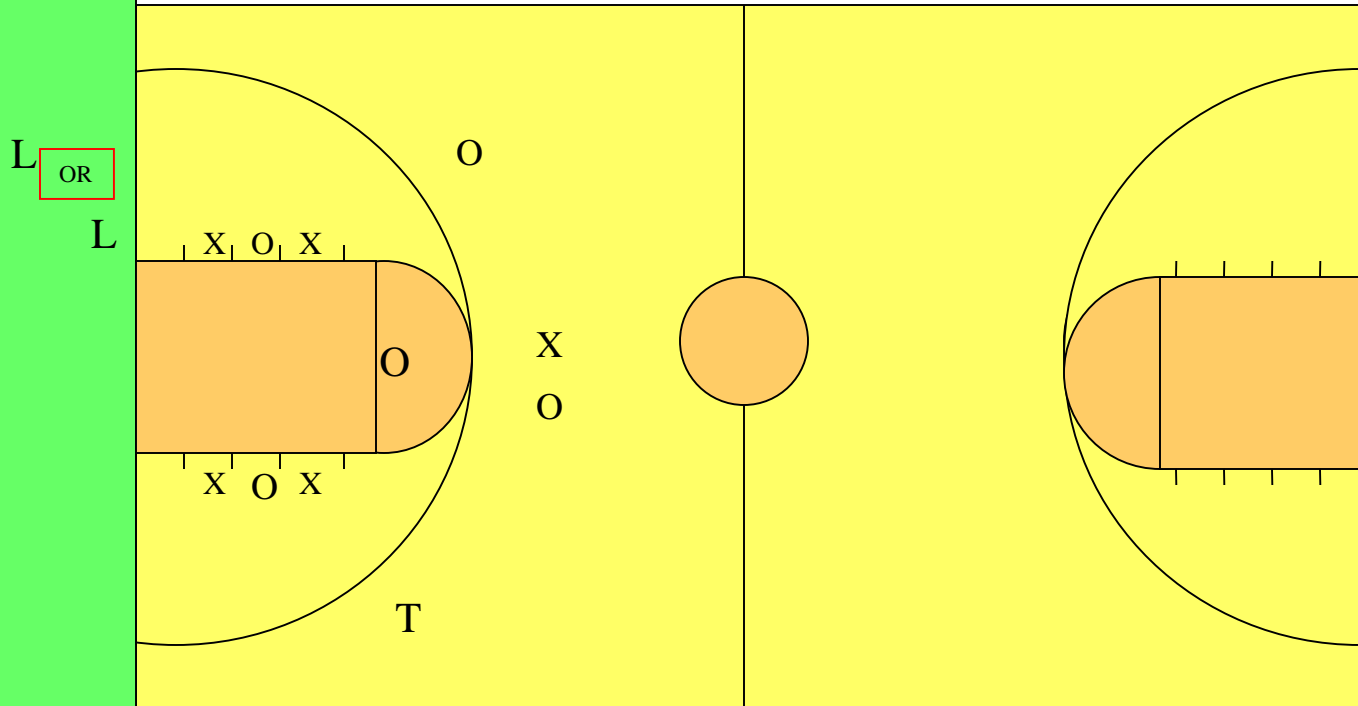
WHEN THE BALL IS GOING TO BE PLAYED AFTER THE SHOT THE LEAD IS 5 TO 6 FEET OFF THE ENDLINE AND 3 TO 4 FEET PAST THE LANE LINE TOWARD THE SIDELINE.

# LANE RESPONSIBILITY – TRAIL POSITION

TEAM BENCH



TEAM BENCH



**TRAIL** IS ONE OR TWO STEPS BEYOND THE FREE THROW LINE AND TWO-THIRDS BACK BETWEEN THE FREE THROW LANE AND THE SIDELINE FOR ALL FREE THROWS.

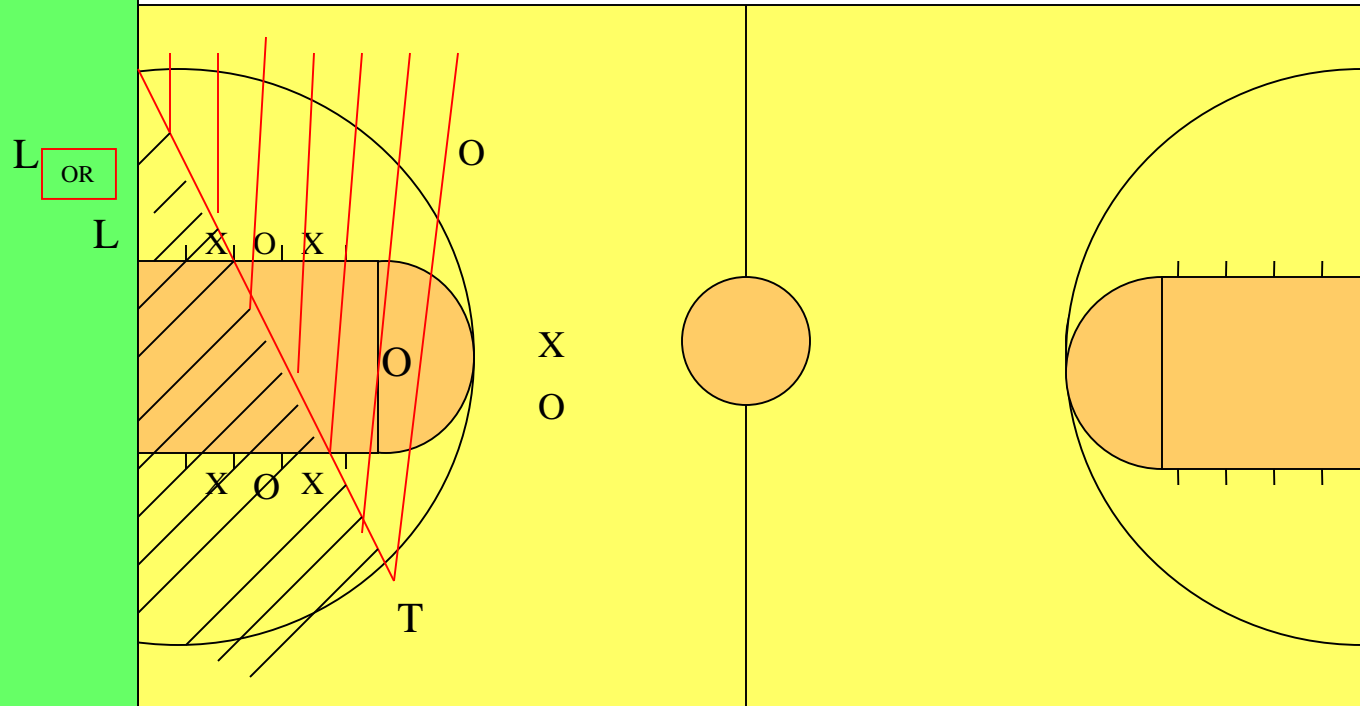
**TRAIL COUNTS** WITH TABLE SIDE HAND AND RAISES TABLE SIDE HAND ON LAST SHOT.

# PRIMARY LANE RESPONSIBILITIES OF EACH OFFICIAL

TEAM BENCH



TEAM BENCH



**TRAIL OFFICIAL** WATCHES TOP TWO SPACES ON OPPOSITE LANE LINE, FREE THROW LINE AND FLIGHT OF BALL, THEN CONCENTRATES ON FOULS AND REBOUNDING ACTION.  
**LEAD OFFICIAL** WATCHES OPPOSITE LANE LINE PLUS FIRST SPACE TABLE SIDE, THEN CONCENTRATES ON FOULS AND REBOUNDING ACTION.



# Violations out of bounds

- ALWAYS stop the clock FIRST
- Use proper signals
- Don't draw attention to yourself
- Don't turn your back to the players





# Time Out

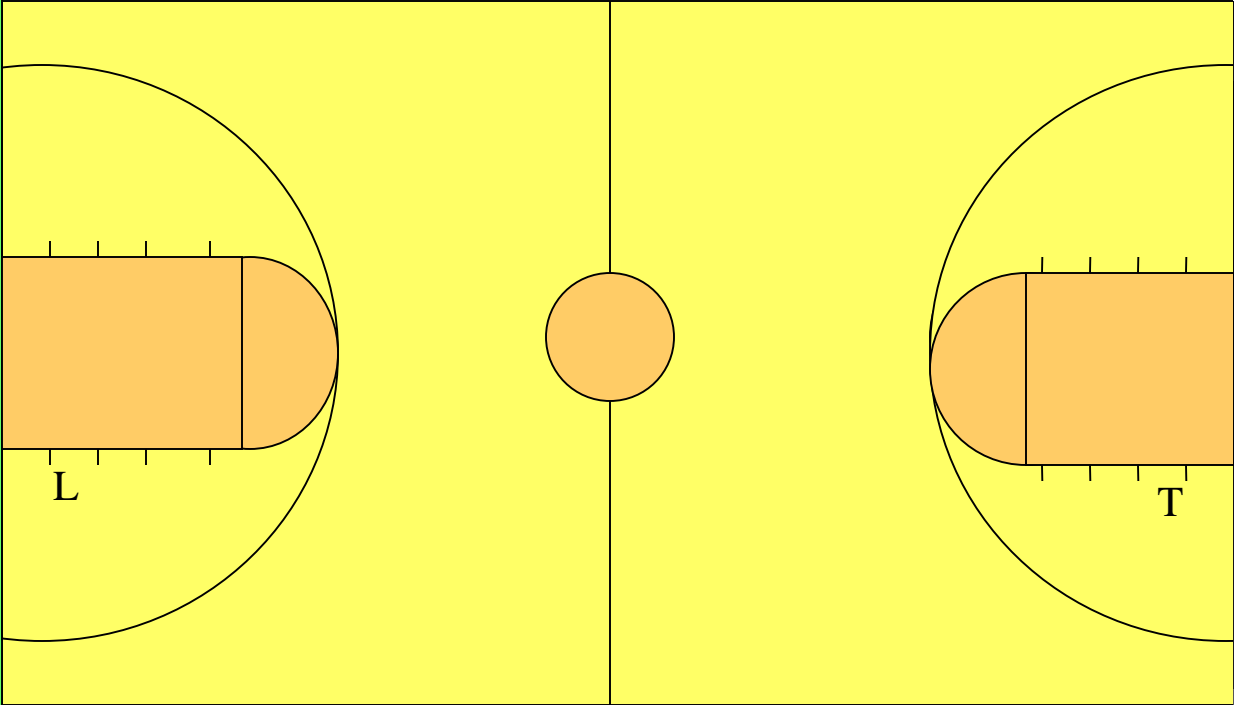
- Positions – Communicate spot of throw in
- Direction-holding the ball
- Warning Signal
- Resumption of play procedure

# TWO PERSON 60 SECOND TIME OUT

TEAM BENCH



TEAM BENCH



THROW IN SPOT X

L

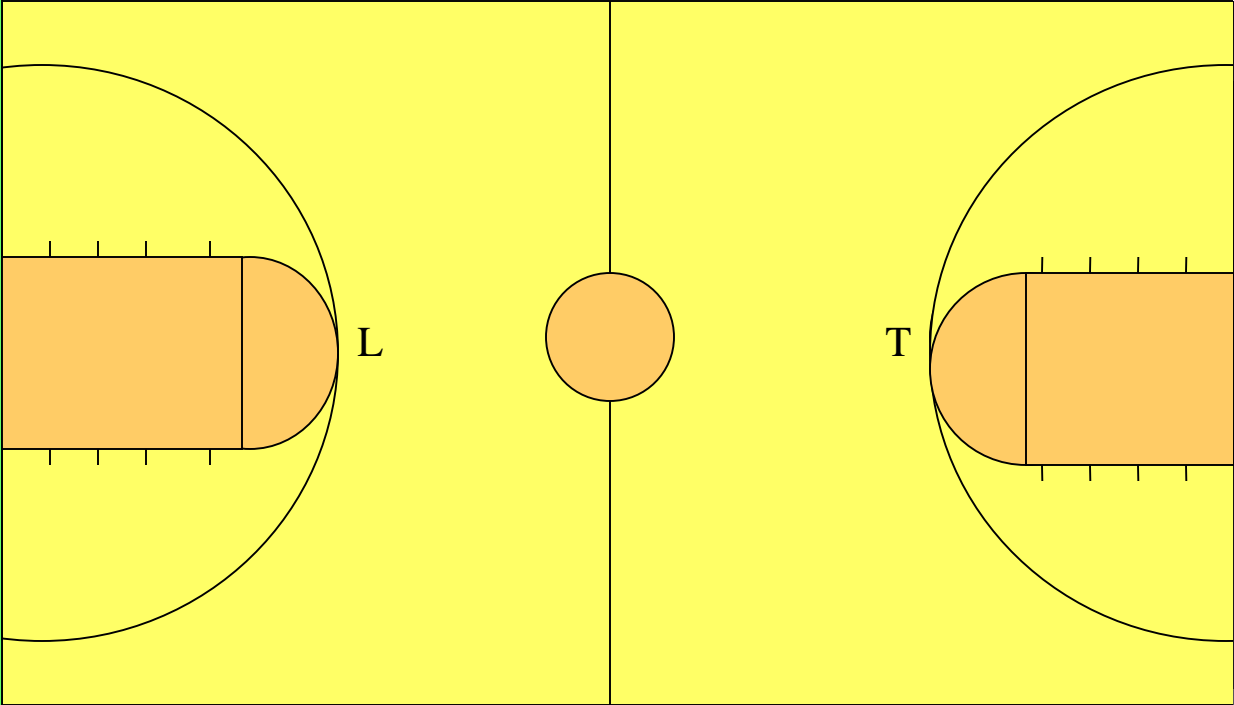
T

# TWO PERSON 30 SECOND TIME OUT

TEAM BENCH



TEAM BENCH



THROW IN SPOT X



# Try for goal

- Follow shooter to the floor
- Basket interference/Goaltending
- Lead cannot be in the paint
- Trail close down for rebounds

# 3 point try

- Responsibility for attempt
- Signal attempt
- Trail mirrors lead on good basket

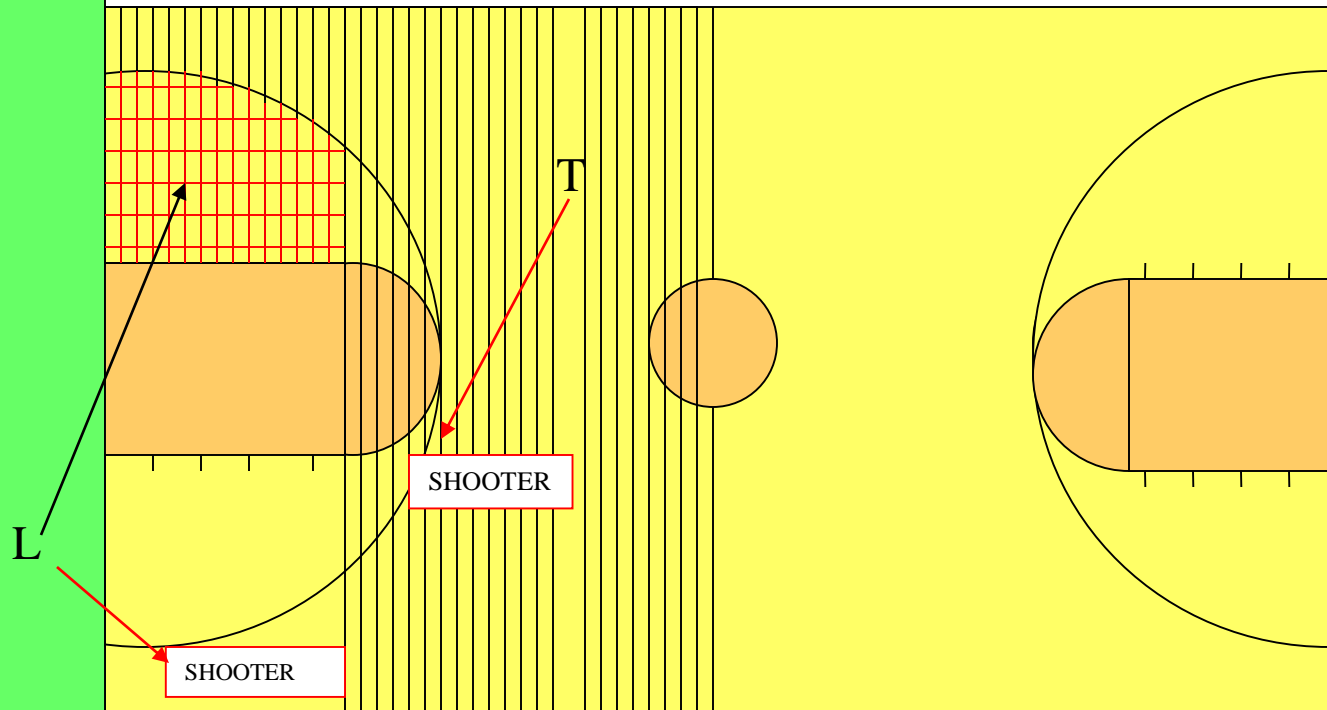


# RESPONSIBILITY FOR ATTEMPT

TEAM BENCH



TEAM BENCH



THE TRAIL OFFICIAL MUST WORK HARD TO COVER THREE POINT TRY FROM THIS AREA.  
THE LEAD OFFICIAL IS WELL OFF THE END LINE AND FOCUSES ON THE AREA OFF THE BALL (EXTENDED ACROSS THE KEY).



# Last second shot

- Trail's responsibility
- Responsibility in transition
- Communicate who has the shot
- Official has whistle at the buzzer
- Pre-game it



QUESTIONS

THANK YOU FOR  
BEING AN  
OFFICIAL